



Equipment Redeployment



© 2013 NxStage Medical, Inc. This document is not intended to replace the NxStage System One or PureFlow SL User Guides or Cartridge Instructions for Use and does not include all of the information necessary to use the system safely and effectively. Patients, partners, and providers should review and refer to the System One and PureFlow SL User Guides and Cartridge Instructions for Use for complete information including all warnings and precautions. The NxStage trademark is registered in the U.S Patent and Trademark Office and is owned by NxStage Medical, Inc. The NxStage trademark is also registered in Australia, Canada, New Zealand the European Union, and Japan. PureFlow and System One are trademarks of NxStage Medical, Inc. CAUTION: Federal law restricts this device to sale by or on the order of a physician. TM0557 Rev. C

Objectives

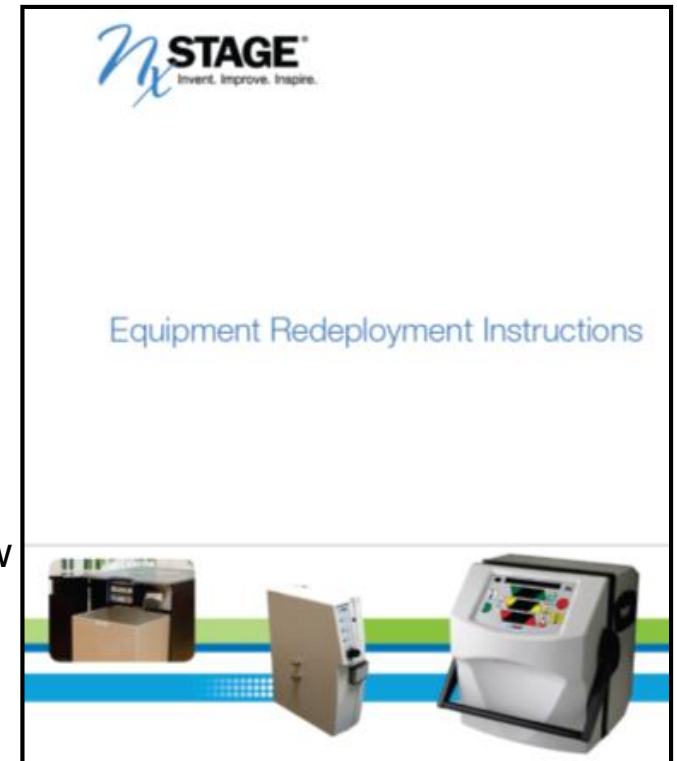
- At the end of this presentation, the attendee should know:
 - Contents of the Equipment Redeployment Instructions
 - Overview of equipment redeployment steps and procedures
 - Redeployment documentation forms
 - How to obtain the redeployment instructions



Equipment Redeployment Instructions

Contents

- Redeployment Introduction
- Redeployment General Information
- Prior to Redeployment
- Equipment Redeployment Steps
- Redeployment Procedures
 - Cyclor Redeployment Overview
 - PureFlow™ SL Redeployment Overview
 - LINX® Water Pre-Treatment System Overview
 - Express Fluid Warmer Redeployment Overview
 - Cyclor Base and Fluid Detection Sensor Redeployment Overview
- Redeployment Forms
- Redeployment Instructions Availability





Redeployment Introduction

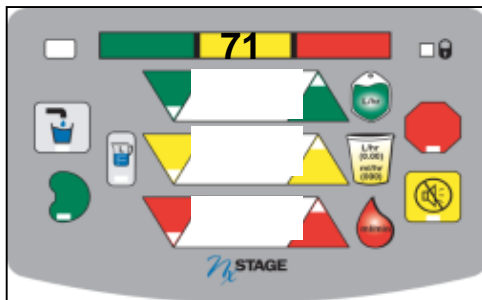
Redeploying NxStage Equipment is Safe

- Disposable fluid pathways minimize fluid contact with equipment
- Similar to in-center equipment use from one patient shift to the next



Redeploying NxStage Equipment is Safe

- NxStage equipment:
 - Has built-in self tests:
 - ◆ Power ON
 - ◆ Use of each Cartridge
 - ◆ New PAK is installed/primed
 - ◆ Use of each SAK
 - Generates alarms in response to test failures
 - Alerts the user if preventive maintenance is required





Redeployment General Information

Always and as Soon as Possible

- Always:

- Use universal precautions
- Call Technical Support, if needed
- Refer to:
 - ◆ Product User Guides
 - ◆ Equipment Redeployment Instruction



- As soon as possible:

- Retrieve equipment from the patient's home
- Perform redeployment procedures
- Inform Customer Service of redeployed equipment serial numbers



Prior to Redeployment

Train Center Personnel

- Review the Redeployment Instructions
- Provide a demonstration of steps/procedures
- Monitor a return demonstration
- Document competency

Redeployment Training Documentation Form		
Use this form to document learner training and competency for the procedures listed.		
Procedures (refer to "Redeployment Procedures" on page 18)	Instruction provided: Trainer's Initials/date	Learner understands / demonstrates procedures correctly: Trainer's Initials/date
<ul style="list-style-type: none"> Review Equipment Redeployment Instructions (NC3927) 		
Cycler		
<ul style="list-style-type: none"> Respond to Cycler Caution 71 Decontaminate returned equipment and accessory exterior surfaces Disinfect the interior surface of the Cycler and clean blood leak detector Adjust System Settings to default values 		
Cycler Base, Fluid Detection Sensor, and Warmer		
<ul style="list-style-type: none"> Decontaminate returned equipment and accessory exterior surfaces Test leak detector sensor alarm 		
PureFlow SL		
<ul style="list-style-type: none"> Respond to Caution 2 and Alarm 853 Check ultraviolet light preventive maintenance status Check conductivity sensor preventive maintenance status Verify conductivity and drain line check valve function Perform CPM-001 procedure Disinfect the conductivity line Disinfect the drain line Decontaminate returned equipment and accessory exterior surfaces Replace the air filter media 		
LINX System		
<ul style="list-style-type: none"> Replace DI Cells Verify self-tests begin 		
NxStage Equipment Redeployment Training is Complete		
Instructor Signature: _____	Date: _____	
Learner Signature: _____	Date: _____	

Obtain Patient Redeployment Kit and Gather Supplies

System Settings						
Parameter No.	Name	Description	Units	Resolution	Range Low High	Default Value
0	Cartridge Type	Cartridge type	ml/sec	N/A ¹ 10 ³	N/A ¹ 00.5 10 ³ 12 ²	N/A ¹ 0.5
1	Maximum FF	Maximum filtration fraction/ flow fraction (FF)	%	1	5 400	10%
2	Initial RP	Initial fluid pump (FF) rate	L/hr	0.1	0 12.0	0 L/hr
3	Initial UFP	Initial ultrafiltration pump (UFP) rate	L/hr	0.01	0 2.00	0 L/hr
4	Initial RP	Initial flow (FF) rate				
5	Initial Fluid Volume	Initial fluid volume to				
6	Initial Height in Battery	Default set weight for				
7	System Pressure Decreasing Alarm Offset	Set a low pressure below the setpoint following rate change. Indication of excessive gas can drop to alarm.				

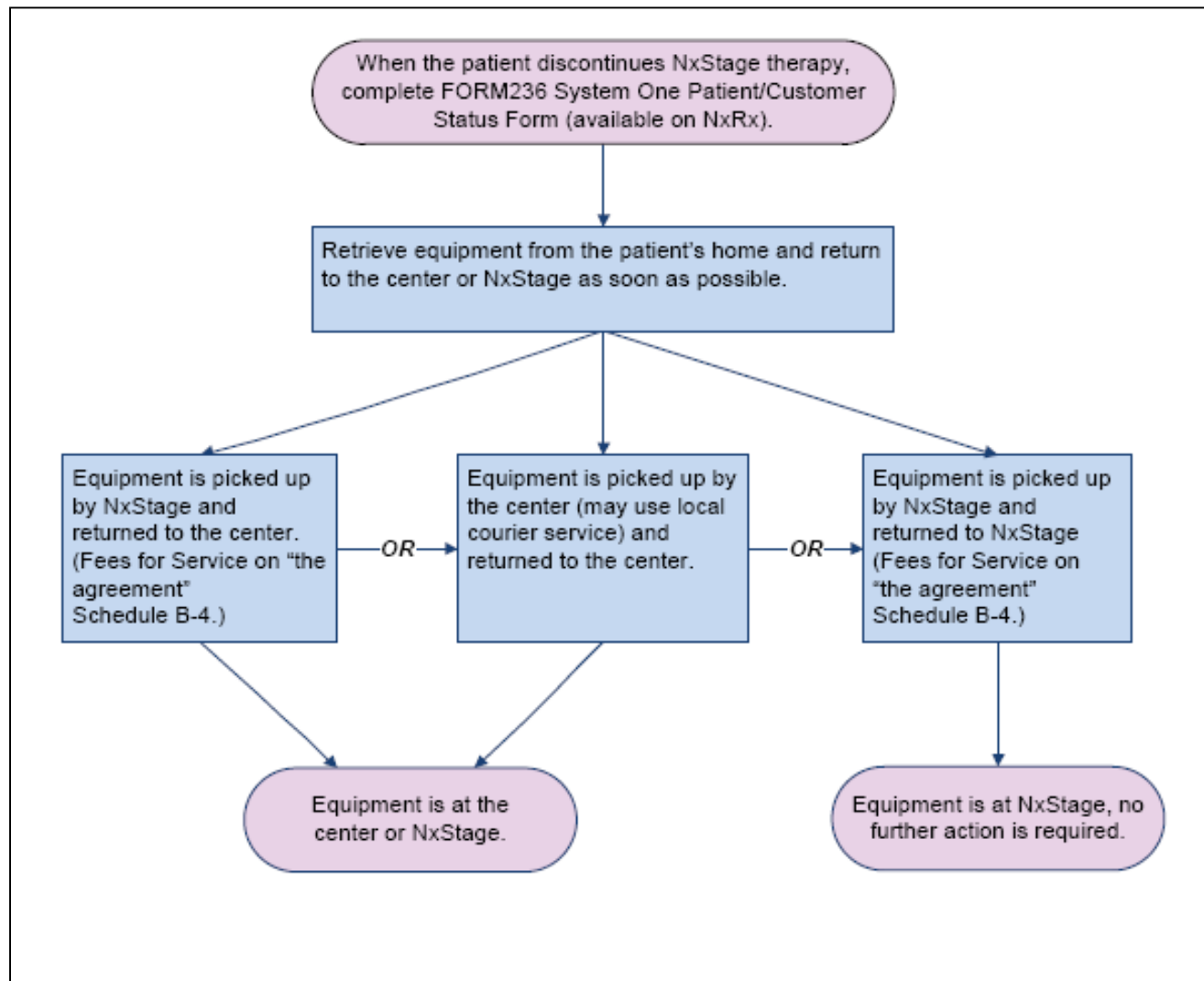
1 For software versions 4.5 and 4.6
2 For software versions 4.6
3 For software version 4.7





Equipment Redeployment Steps

Return Equipment to Center or NxStage



Inspect Equipment and Accessories

- Call Technical Support if...
- Call Customer Support if ...

Equipment and Accessories Form

Use this form to:

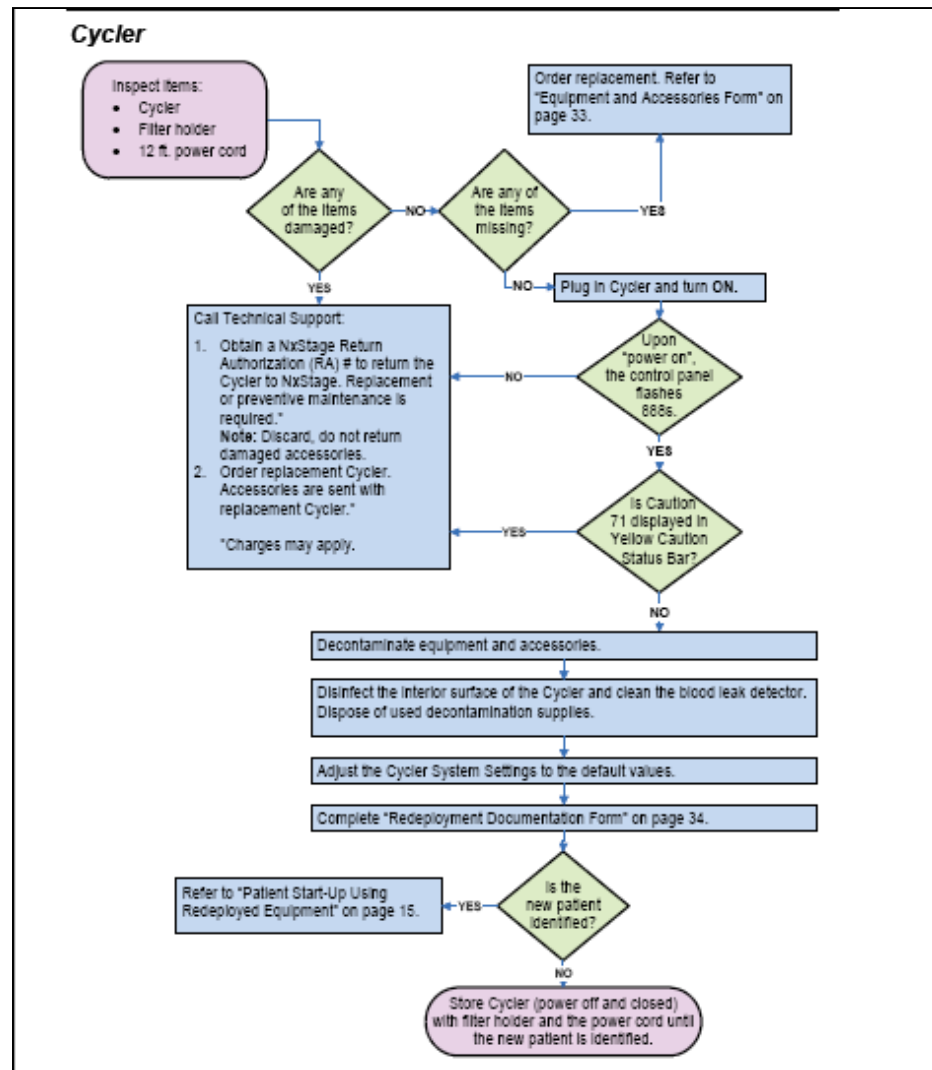
- Inspect returned equipment to ensure that all accessories are present.
- Order replacement accessories from Customer Service as required.

Note: Based upon your center contract, there may be a charge for accessories.

Equipment / Accessories	Check If Present	Reorder Number
System One Cyclor with Computer (Jewel Box or ConNx Box attached)	<input type="checkbox"/>	NX1000-1
Filter holder	<input type="checkbox"/>	NX0593-P
12' power cord	<input type="checkbox"/>	NC1176
Cycler Base, including:	<input type="checkbox"/>	NX0642
Fluid Detection Sensor *	<input type="checkbox"/>	NX0664
PureFlow SL cabinet	<input type="checkbox"/>	NX2000-2
PureFlow SL wheeled base	<input type="checkbox"/>	NX2000-3
PureFlow SL control unit	<input type="checkbox"/>	NX2000-1
Interconnect power cord	<input type="checkbox"/>	86557900
12' power cord	<input type="checkbox"/>	NC1176
Saline hook	<input type="checkbox"/>	NX0429-P
Air filter fan cover	<input type="checkbox"/>	NC3823
USB cable	<input type="checkbox"/>	NX0509
ComfortMate Fluid Warmer	<input type="checkbox"/>	FW-200
IV pole used with table top stand	<input type="checkbox"/>	NX0248-02
Table top stand, including:	<input type="checkbox"/>	NX0248-01
4-hanger top for IV pole*	<input type="checkbox"/>	228
Screw (spade head) to attach hanger to pole*	<input type="checkbox"/>	NC0384
Screw (2") to attach pole to stand *	<input type="checkbox"/>	NC1292
Screw (thumb screw) to attach table top stand to Cyclor *	<input type="checkbox"/>	NC0426
0.5 meter Interconnect power cord for FW-200*	<input type="checkbox"/>	86557030
Express Fluid Warmer	<input type="checkbox"/>	FW-300
Express Fluid Warmer Accessory Kit, including:	<input type="checkbox"/>	FW-300-1
Bag cover *	<input type="checkbox"/>	NX0599
IV pole*	<input type="checkbox"/>	NX0485
Interconnect power cord*	<input type="checkbox"/>	86557030
Top mount*	<input type="checkbox"/>	NX0484
Bottom mount*	<input type="checkbox"/>	NX0600
Screw (thumb screw) to attach Bottom Mount to Cyclor*	<input type="checkbox"/>	NC0426

* This item is included with the companion product as listed, but may be ordered separately using the appropriate reorder number, if required.

Perform Redeployment Steps



Perform Redeployment Procedures

F. Disinfect the PureFlow SL Drain Line

1. Attach a recirculation connector (female-female adapter) to a 30 ml syringe to create a recirculation adapter (RA).



2. Fill the RA with 30 ml of the prepared 1:10 bleach solution.
3. Connect the RA to the control unit waste line connector (yellow connector).
4. Push the bleach solution into the waste line connector. A drain line must be connected to the control unit and positioned in the drain.



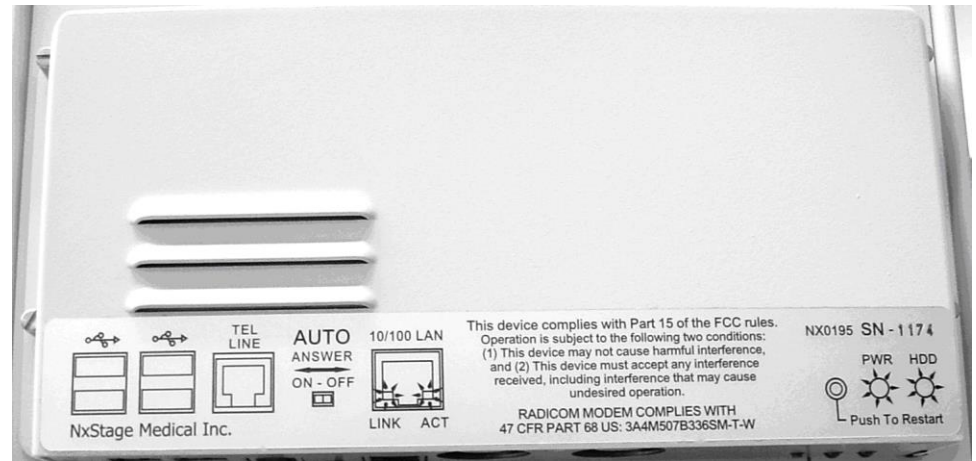
5. Let the solution stay in the drain line for ten minutes.
6. Disconnect the RA from the waste line connector and repeat Steps 2 through 5. A total of 60 ml of the bleach solution is used to flush the drain line.
7. Disconnect the RA. Thoroughly rinse with tap water. Refill with 30 ml of tap water.
8. Connect the RA to the control unit waste line connector.
9. Push the tap water into the waste line connector on the control unit.
10. Repeat Steps 7 through 9 two more times. This ensures that the bleach solution is outside of the PureFlow SL and into the drain line.

Note: Residual chlorine testing of the drain line is not required because patient contact is impossible: 1) Multiple check valves contained in the lines; 2) uni-directional pump flow prevents reverse flow during use; and 3) connection is upstream to a single-use disposable.



Cyclor Redeployment Overview

Cycler Redeployment



Jewel Box connections shown

Cycler Redeployment



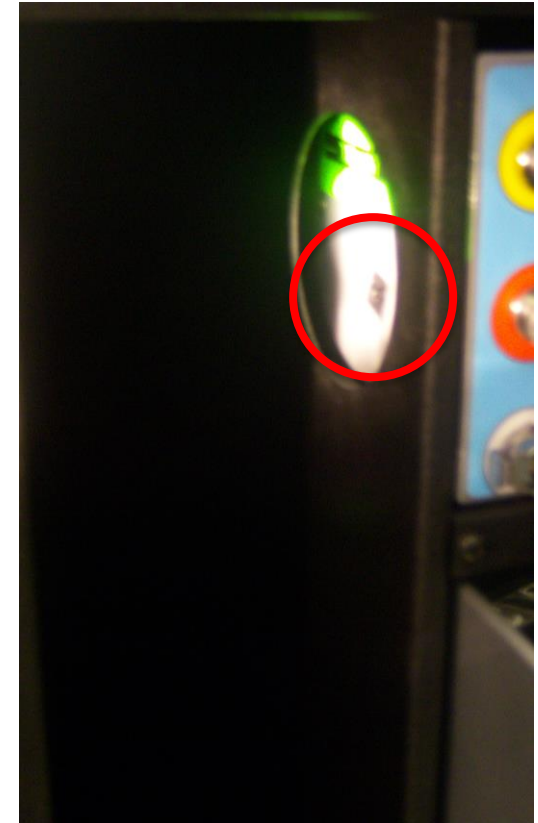


PureFlow SL Redeployment Overview

PureFlow SL Redeployment



Control Unit rear connections



PAK electrical cable connection

PureFlow SL Redeployment



Your software version may differ from this display.

PureFlow SL Redeployment

- Check Control Unit Ultraviolet Light preventive maintenance
 - If time is **less than 156 batches**, replace Control Unit
- Check Control Unit Conductivity Sensor preventive maintenance

USER MAINTENANCE
Settings ▼

UV Light PM
Due in XX batches ▼

USER MAINTENANCE
PM Info ▲▼

Condo Sensor PM
Due in XX days ▲▼

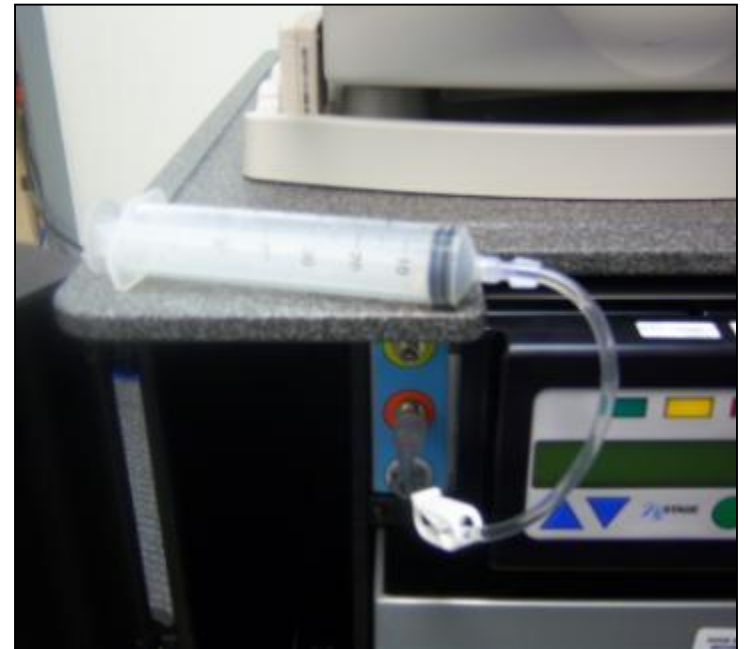
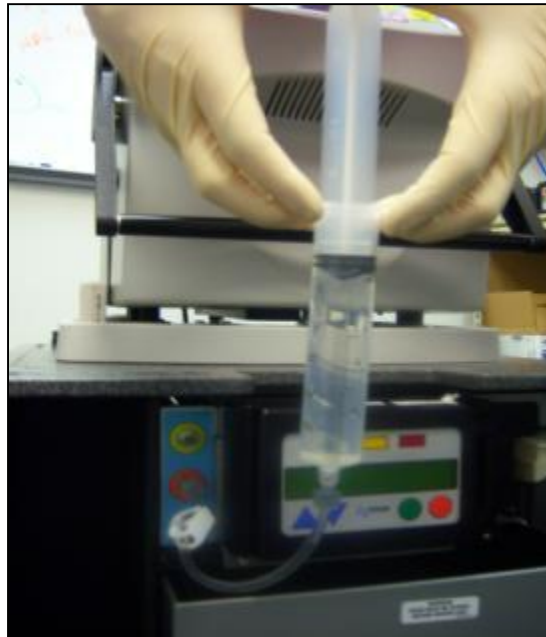
PureFlow SL Redeployment

- Verify Conductivity Line check valve function



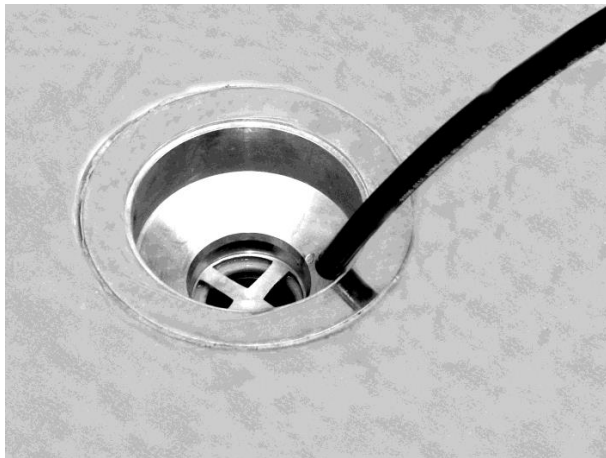
PureFlow SL Redeployment

- If the Conductivity Sensor preventive maintenance time **is less than 300 days**, perform the CPM-001 procedure



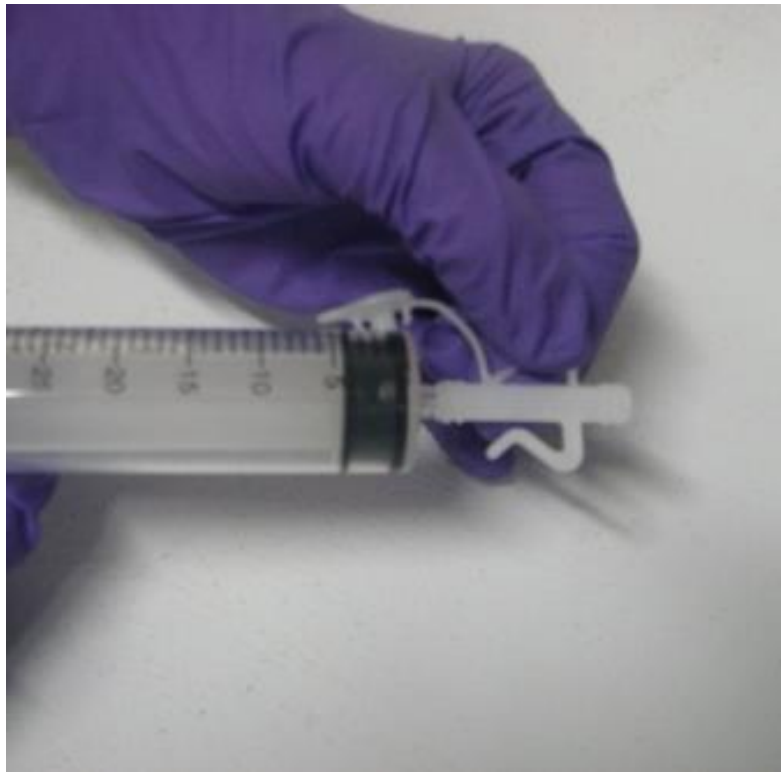
PureFlow SL Redeployment

- Disinfect the Conductivity Line



PureFlow SL Redeployment

- Verify Drain Line check valve function

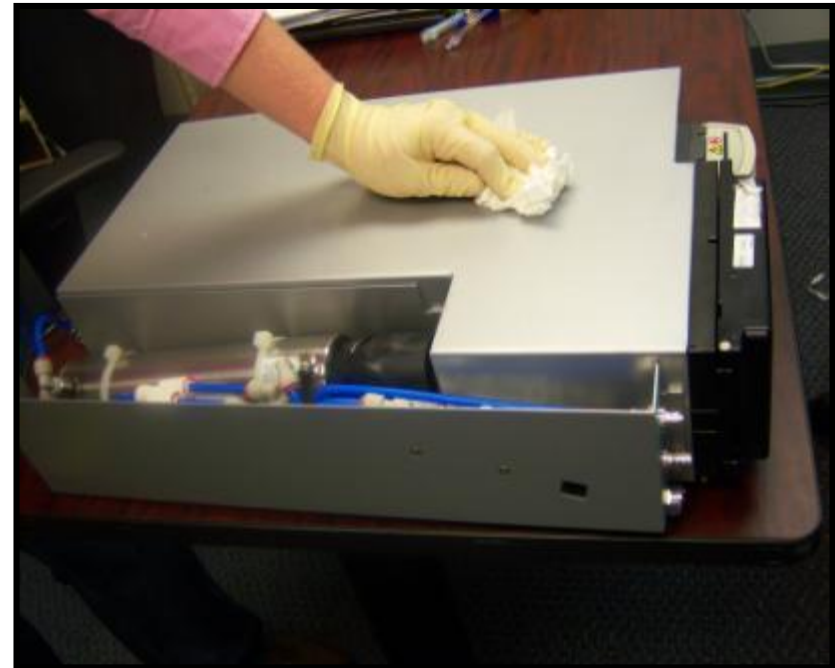
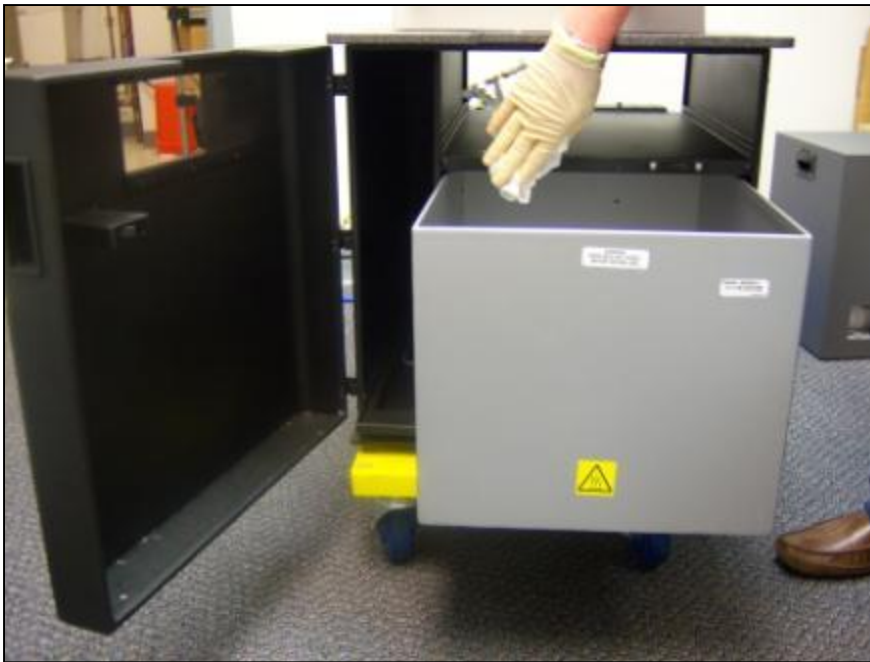


PureFlow SL Redeployment

- Disinfect the Drain Line

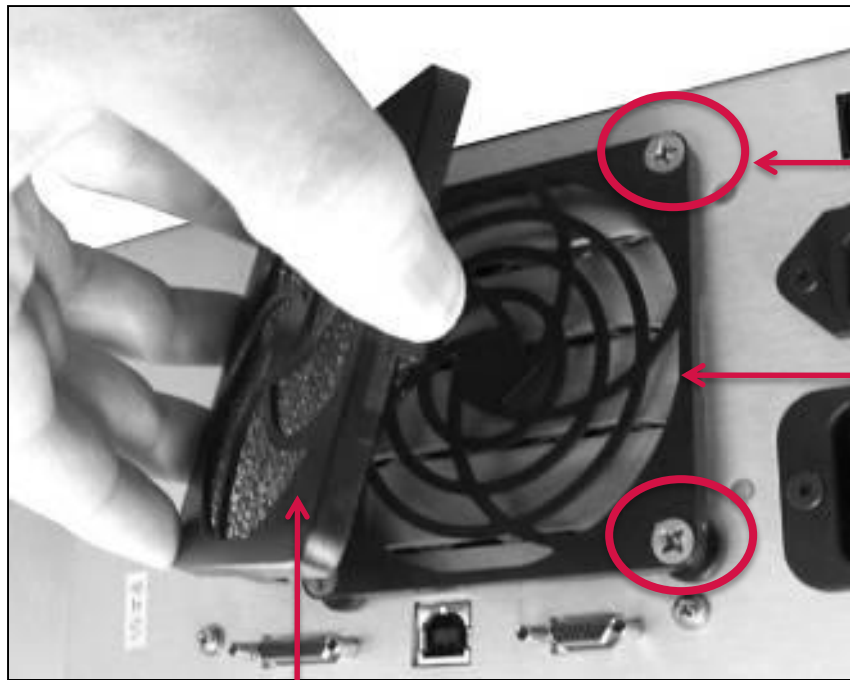


PureFlow SL Redeployment



PureFlow SL Redeployment

- Replace the PureFlow SL Air Filter media
 - Note: Leave the Guard attached to PureFlow SL.



Do not remove
Guard screws

Air Filter Guard

Air Filter cover with media



LINX Water Pre-Treatment System Overview

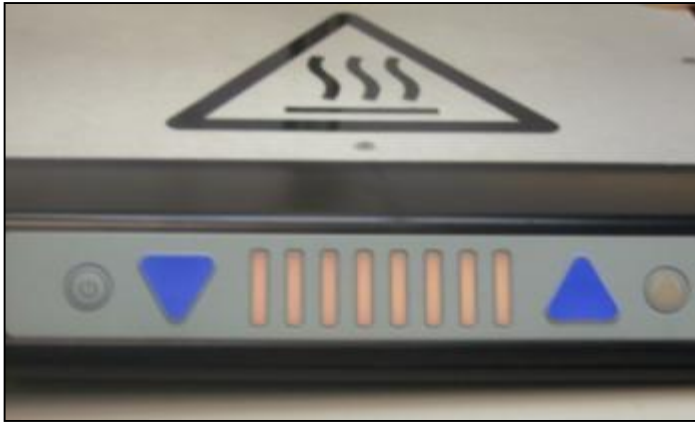
LINX Redeployment





Express Fluid Warmer Redeployment Overview

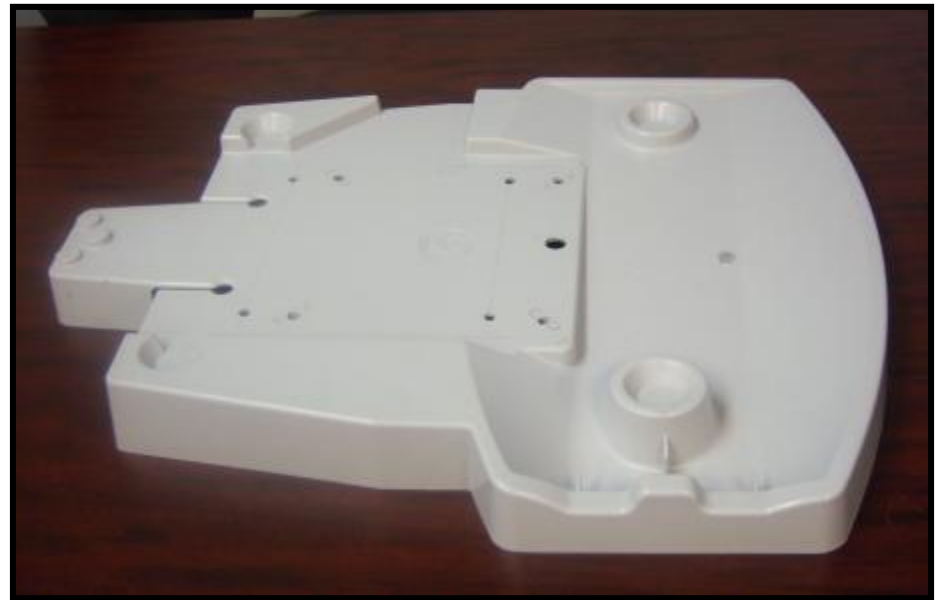
Express Warmer Redeployment





Cycler Base and Fluid Detection Sensor Redeployment Overview

Cycler Base and Fluid Detection Sensor





Redeployment Forms

Redeployment: Training Documentation

Redeployment Training Documentation Form Use this form to document learner training and competency for the procedures listed.		
Procedures (refer to "Redeployment Procedures" on page 18)	Instruction provided: Trainer's initials/date	Learner understands / demonstrates procedures correctly: Trainer's Initials/date
<ul style="list-style-type: none"> Review Equipment Redeployment Instructions (NC3927) 		
Cycler		
<ul style="list-style-type: none"> Respond to Cycler Caution 71 Decontaminate returned equipment and accessory exterior surfaces Disinfect the interior surface of the Cycler and clean blood leak detector Adjust System Settings to default values 		
Cycler Base, Fluid Detection Sensor, and Warmer		
<ul style="list-style-type: none"> Decontaminate returned equipment and accessory exterior surfaces Test leak detector sensor alarm 		
PureFlow SL		
<ul style="list-style-type: none"> Respond to Caution 2 and Alarm 853 Check ultraviolet light preventive maintenance status Check conductivity sensor preventive maintenance status Verify conductivity and drain line check valve function Perform CPM-001 procedure Disinfect the conductivity line Disinfect the drain line Decontaminate returned equipment and accessory exterior surfaces Replace the air filter media 		
LINX System		
<ul style="list-style-type: none"> Replace DI Cells Verify self-tests begin 		
NxStage Equipment Redeployment Training Is Complete		
Instructor Signature: _____	Date: _____	
Learner Signature: _____	Date: _____	

Redeployment: Equipment Documentation

Redeployment Documentation Form	
Cycler Serial #: _____ Confirm the following: <input type="checkbox"/> Equipment and accessories inspected. <input type="checkbox"/> Upon Power On: the Control Panel Flashes 888s. <input type="checkbox"/> Upon Power On: Yellow Caution # 71 not displayed. <input type="checkbox"/> Equipment exterior surfaces and accessories decontaminated. <input type="checkbox"/> Cycler interior surface disinfected, and blood leak detector and mirror cleaned. <input type="checkbox"/> System Settings set to CAR-170 default values. Completed by _____ Date: _____ Cycler Base and Fluid Detection Sensor Serial #: N/A Confirm the following: <input type="checkbox"/> Inspect equipment and accessories. <input type="checkbox"/> Sensor alarms appropriately when battery inserted and when the sensor's metal bars are contacted with moist cloth. <input type="checkbox"/> Equipment exterior surfaces and accessories decontaminated. Completed by _____ Date: _____ Express Fluid Warmer Serial #: _____ Confirm the following: <input type="checkbox"/> Equipment and accessories inspected. <input type="checkbox"/> Upon power cord connection, the Express Fluid Warmer's Comfort status lights flash red, yellow then green and the standby and hot surface indicators come on then go off. An alarm sounds, all lights go out and the standby light remains lit. <input type="checkbox"/> Equipment and accessories exterior surfaces decontaminated. Completed by _____ Date: _____ LINX Water Pre-Treatment System Serial #: _____ Confirm the following: <input type="checkbox"/> Equipment and accessories inspected <input type="checkbox"/> Upon power on - the LINX status lights go on and off and there is NO audible alarm.	<input type="checkbox"/> Replace DI Cells Completed by _____ Date: _____ Signature: _____ ComfortMate Table Top Stand Serial #: _____ Serial #: N/A Confirm the following: <input type="checkbox"/> Equipment and accessories inspected. <input type="checkbox"/> Upon Power On, the warmer's control panel lights flash, an alarm sounds and the green light on the front of the warmer remains lit. <input type="checkbox"/> Equipment exterior surfaces and accessories decontaminated. Completed by _____ Date: _____ Signature: _____ PureFlow SL Control Unit Serial #: _____ Confirm the following: <input type="checkbox"/> Equipment and accessories inspected. <input type="checkbox"/> Upon Power On: the control panel LEDs flash red, green, yellow and the panel displays NxStage Medical Inc. and software version. <input type="checkbox"/> Upon Power On: Caution 2 or Alarm 853 are not displayed. <input type="checkbox"/> Preventive Maintenance (PM) status for the Ultraviolet (UV) light is greater than 156 batches. <input type="checkbox"/> Conductivity check valve and drain line check valve function verified. <input type="checkbox"/> Conductivity sensor PM is due in greater than 300 days or CPM-001 is completed. <input type="checkbox"/> Conductivity line disinfected. <input type="checkbox"/> Drain line disinfected. <input type="checkbox"/> Equipment and accessories exterior surfaces decontaminated. <input type="checkbox"/> Air filter media replaced. Completed by _____ Date: _____ Signature: _____ PureFlow SL Cabinet Serial #: _____ Confirm the following: <input type="checkbox"/> Equipment and accessories inspected. <input type="checkbox"/> Equipment exterior surfaces and accessories decontaminated. Completed by _____ Date: _____ Signature: _____

Patient Equipment Log

Patient Equipment Log Form

Use this form to maintain a record of patient equipment by serial number

Patient Name: _____

Therapy Start Date: _____ Therapy End Date: _____

Equipment Serial #	Date Received	Date Returned to: Center NxStage	Date Redeploy Procedures Completed	Date Redeployed	Redeployed to (Patient)
Cycler					
PureFlow SL Control Unit					
PureFlow SL Cabinet					
ComfortMate Warmer					
Express Fluid Warmer					
LINX System					
Other					

NxRx Center Inventory Report

Center Inventory

Show entries Search:

Equipment Location ▲	Part ◆	Serial No. ◆	Ship Date ◆	Status ◆
List of Patient's Name	NX2000-2 (PureFlow SL Chassis)	1190	10/12/2006	Unemployed
	FW-200 (Comfortmate Warmer)	C8911	02/27/2009	Unemployed
	NX1000-1 (NxStage System One - Chronic)	7403	11/03/2008	Unemployed
	FW-200 (Comfortmate Warmer)	C12378	01/05/2009	Unemployed
	NX1000-1 (NxStage System One - Chronic)	5117	01/05/2009	Unemployed
	NX2000-1 (NxStage PureFlow SL Control Unit)	4176	01/22/2009	Unemployed
	NX2000-2 (PureFlow SL Chassis)	4798	01/15/2009	Unemployed
	NX2000-2 (PureFlow SL Chassis)	2454	06/27/2007	Unemployed
	NX2000-2 (PureFlow SL Chassis)	2926	10/04/2007	Unemployed
	FW-200 (Comfortmate Warmer)	C8997	10/09/2008	Deployed
	NX1000-1 (NxStage System One - Chronic)	7470	09/22/2008	Deployed
	NX1000-1 (NxStage System One - Chronic)	7385	06/09/2008	Deployed
	FW-200 (Comfortmate Warmer)	C9050	07/10/2006	Unemployed
	FW-200 (Comfortmate Warmer)	C12629	02/14/2009	Deployed
	NX1000-1 (NxStage System One - Chronic)	9519	10/10/2008	Deployed
	NX2000-1 (NxStage PureFlow SL Control Unit)	4013	10/10/2008	Deployed
	NX2000-2 (PureFlow SL Chassis)	4504	10/10/2008	Deployed
	FW-200 (Comfortmate Warmer)	C8337	08/02/2007	Deployed
	NX1000-1 (NxStage System One - Chronic)	5780	05/16/2008	Deployed
	NX2000-1 (NxStage PureFlow SL Control Unit)	2201	01/07/2009	Deployed
	NX2000-2 (PureFlow SL Chassis)	1062	08/21/2006	Deployed
	NX1000-1 (NxStage System One - Chronic)	7433	05/19/2008	Unemployed
	NX2000-2 (PureFlow SL Chassis)	2848	09/21/2007	Unemployed
	FW-200 (Comfortmate Warmer)	C9963	04/10/2007	Deployed
	NX1000-1 (NxStage System One - Chronic)	7014	03/24/2008	Deployed

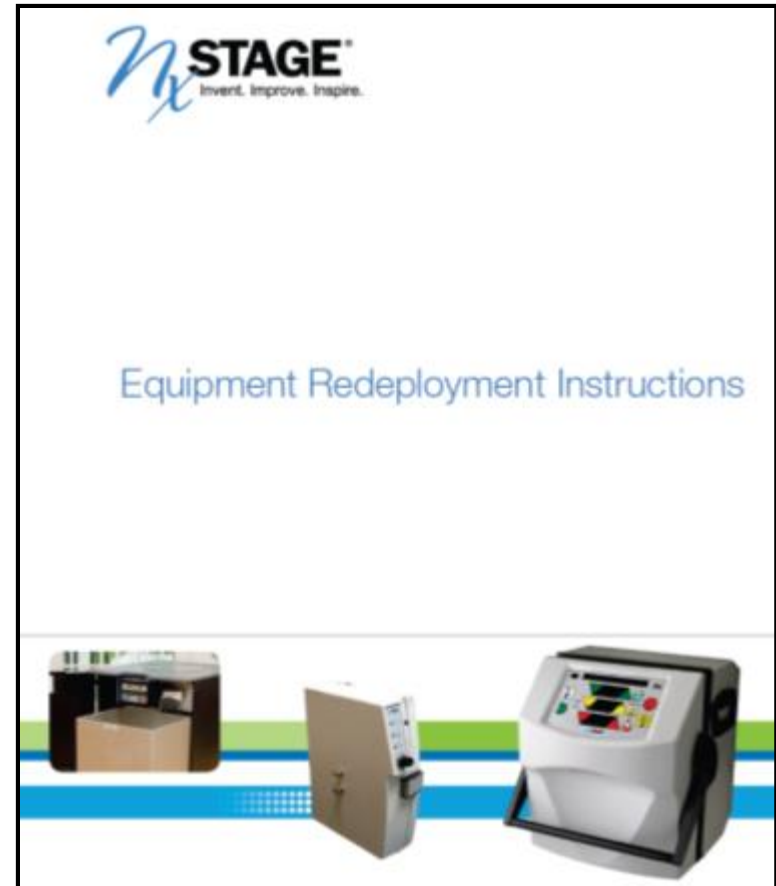
Showing 1 to 25 of 100 entries ◀ ▶



Redeployment Instructions Availability

Available Electronically

- NxDocuments
- NxStage Web Site



thank you



350 Merrimack St. Lawrence, MA 01843
www.nxstage.com • tel: 978-687-4700